

## BRIDGING THE GAP FOR HEALTHCARE OWNERS

Centennial works to exceed customer expectations by providing responsive contracting that supports healthcare owners for **renovation and infrastructure projects** as well as for the **removal, installation and/or relocation of sophisticated medical equipment**. We build relationships by keeping our promises and honoring our commitments – a key reason why we've been privileged to **successfully complete in excess of 800 projects at more than 85 different healthcare facilities** across the U.S.

Many healthcare owners find that **we bridge a service gap** by providing solutions for projects too large or complex for in-house staff and too small for a conventional Construction Management (CM) firm.

Our programs are known for being comprehensive – from preconstruction to closeout – and for being tightly structured to manage risk. Centennial offers the added assurance of **successful project experience in 26 patient risk groups**.

Our relationship-based delivery model allows us to consistently provide a level of service, expertise and resources for renovation, repair and remodeling that are normally expected only on large, new-construction projects.





**CENTENNIAL**  
Part of the Bilfinger Group

## CENTENNIAL'S VALUE EQUATION

Centennial is the contractor who thinks beyond the blueprints in planning your work. The primary focus of our healthcare construction professionals, many of whom have earned the designation of **Certified Healthcare Constructor** from the **American Society for Healthcare Engineering (ASHE)**, is to mitigate project risk by deploying proven, dependable construction solutions, resources and support.

We specialize in precisely preplanning and managing projects with multiple details and disciplines. By contracting these needs to Centennial as an experienced single-source partner, our clients **strengthen their entire facility team** and tap the optimal delivery method.

Facility upgrade and expansion projects, large and small, benefit from Centennial's capabilities to **streamline administration, speed delivery, control costs** and **heighten accountability** – with **full transparency**.

To assure that prospective construction projects have minimal impact on day-to-day facility operations, Centennial provides:

- Preconstruction evaluation, regardless of project size
- Real-time costing and scheduling for the life of the project
- Constructability review, including code compliance
- Preconstruction risk assessment
- Written plan of how construction will “work around” operations
- ICRA and ILSM/ALSM documentation

Centennial also has extensive experience with inspections by the Joint Commission and other Authorities Having Jurisdiction (AHJ). All jobsite personnel hold OSHA 30-hour safety course certification.

WE CREATE. WE CARE. WE CAN.  
**WE MAKE IT WORK.**





**CENTENNIAL**  
Part of the Bilfinger Group

## BUILDING PARTNERSHIPS THAT WORK

The #1 goal of the Centennial team is to **keep our promises and honor our commitments** in order to exceed client expectations and **build strong partnerships, strengthened over time**. Our veteran construction professionals, deployed in more than 30 offices across the U.S., are highly skilled as dedicated client advocates and excel at exploring and unearthing stated and unstated client needs.

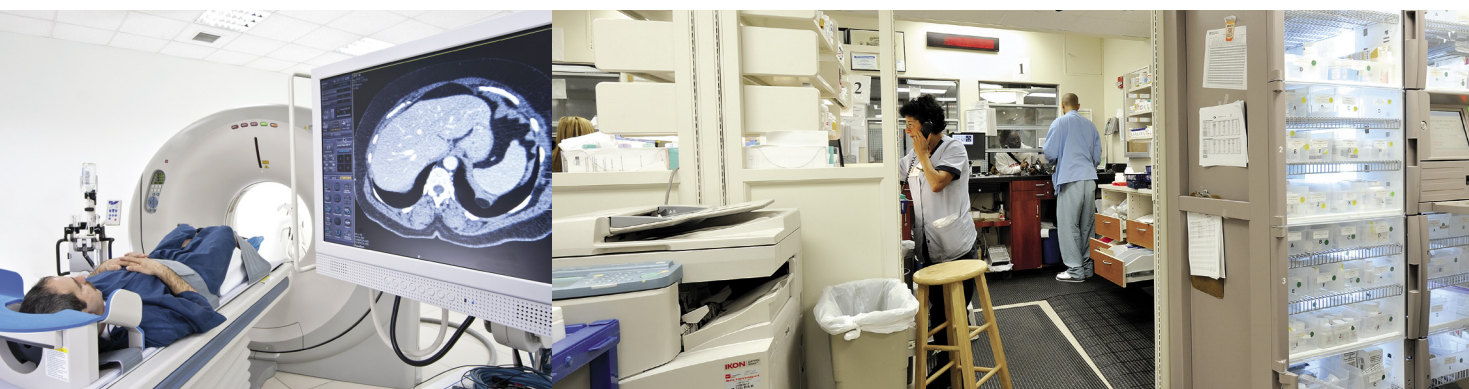
Centennial's **disciplined approach yields solutions that flexibly address the unique logistical challenges** posed by performing construction in populated healthcare facilities. We are expert in planning and managing projects to minimize disruption, maximize safety and accelerate completion. Time after time in healthcare settings from coast to coast, Centennial's leading-edge project delivery systems have proven superior to traditional alternatives.

*"Centennial's team has demonstrated integrity, judgment and skill in the execution of multiple complex projects while working in an occupied hospital."*

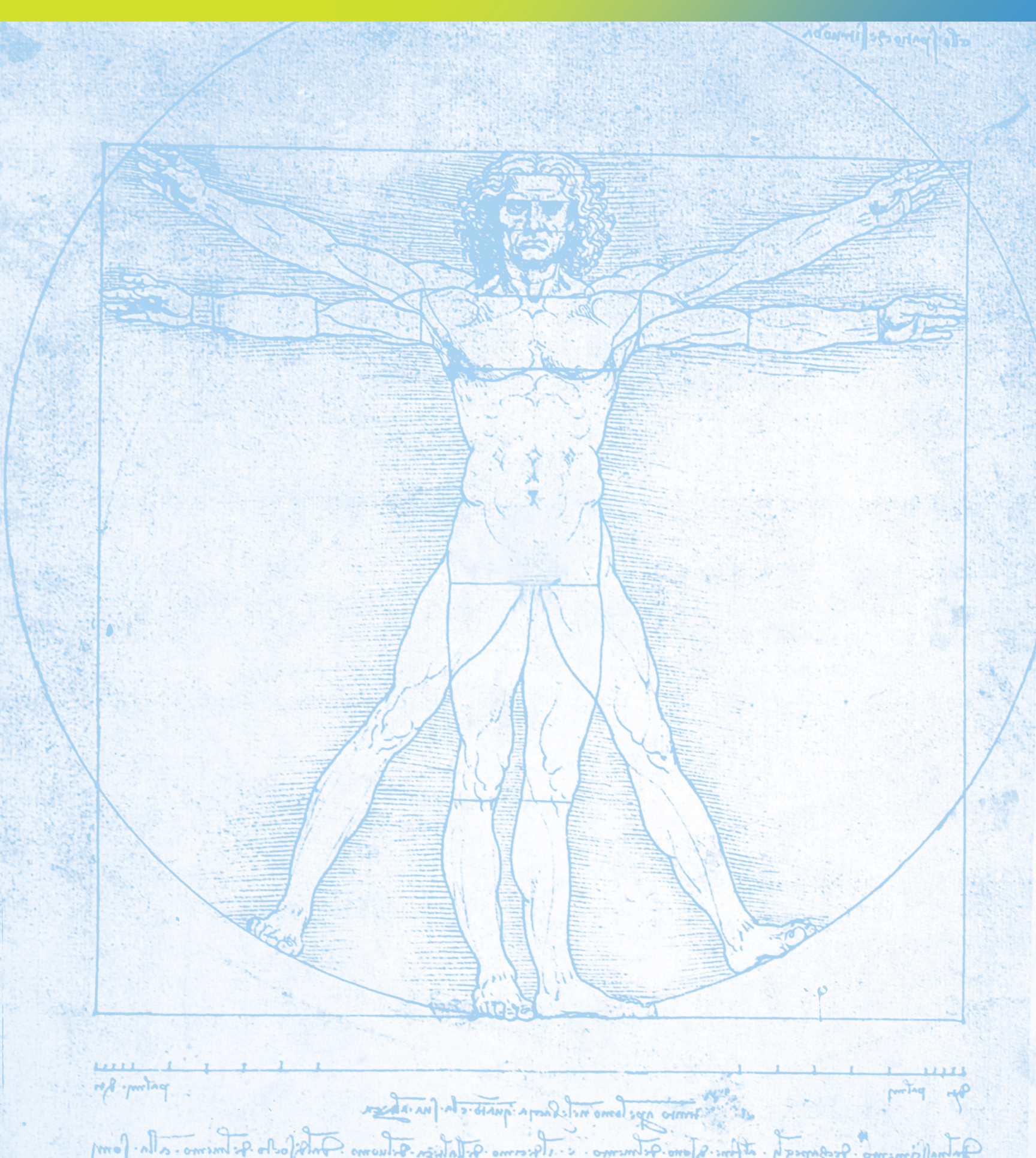
Construction Manager  
University of Washington

Our client-centric approach produces significant time savings, reduces capital at risk and **creates predictable outcomes by simplifying solutions to complex demands**.

In an era of surging demand for cost-efficient patient care and mandates to continuously invest in new medical technology, Centennial's expert guidance provides healthcare owners with a competitive advantage.







**CENTENNIAL**  
Part of the Bilfinger Group



## ADVANCING YOUR SATISFACTION & SUCCESS

*"If you choose  
Centennial as your  
next contractor, you  
will have made an  
excellent choice."*

Senior Project Manager  
Harris Health System

Centennial welcomes the opportunity to discuss **how we may serve you**. We pledge to work daily to earn your trust on **every project you entrust to us** and will always strive to advance the best interests of your institution with the **utmost commitment to your success**.

Typical assignments include:

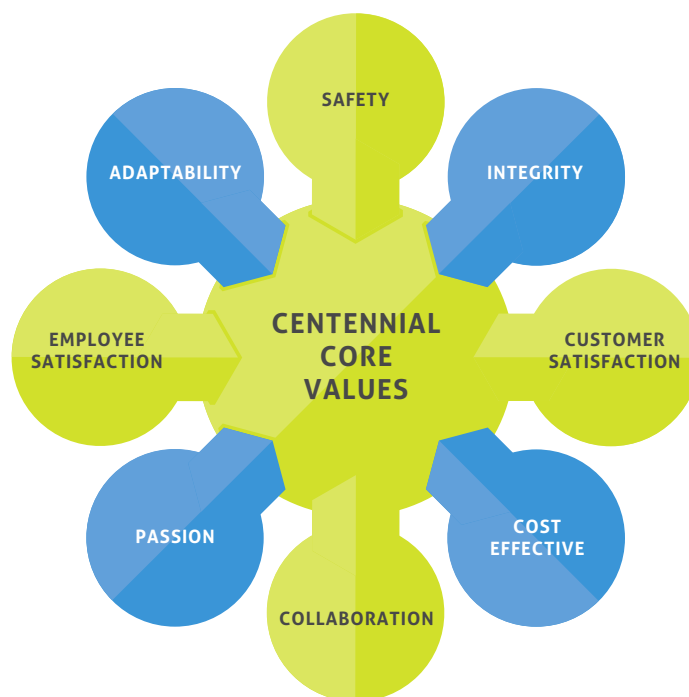
- Renovations
- Equipment Setting and Relocation
- Infrastructure Improvements
- Sustainable Initiatives (Green and LEED)
- Scheduled Maintenance
- New Construction
- Emergency Repairs

You can count on Centennial to value and respect the depth and talents of your in-house construction team and to clearly assess and communicate where we can **add value to benefit your facility plans and programs**. The mutual trust we build inspires us to deliver our best – and makes *your goals our goals*. Centennial is a partner that **consistently meets the full promise of performance** and **successfully anticipates your current and future needs**.

Our flexibility in adapting to your specific requirements cultivates a spirit of collaboration that adds value to every interaction. Likewise, **our performance-based models** are conceived to deliver exceptional results, with safety and security paramount. We welcome the opportunity to become **a core contributor to your construction services team**.

## CENTENNIAL CORE VALUES

Centennial team members are empowered to provide high quality, responsive construction and facility operations services within the framework of our core values.





**CENTENNIAL**  
Part of the Bilfinger Group

WE CREATE. WE CARE. WE CAN.  
**WE MAKE IT WORK.**